

nokian[®]
TYRES

SUMMER TIRES 2019



4-6 New products:
Nokian Powerproof
& Nokian Wetproof

7 This is what
drivers value in
summer tires

22 Consumer
promises – More
peace of mind

IT'S A BEAUTIFUL JOURNEY

While enjoying the sunny and beautiful summer days, it is sometimes easy to forget the slippery driveways and rain-soaked roads your tires also need to master.

Nokian Tyres' unique Scandinavian expertise ensures your journey is safe and enjoyable in all conditions. The premium quality, durability and eco-friendliness of our tires is based on careful research, structural development and testing in real driving conditions.

So start planning for the summer days ahead and seek out adventures. No matter where life takes you, with Nokian Tyres you'll have peace of mind for the journey ahead.

NEW ERA OF SUMMER TIRES

This summer Nokian Tyres brings entirely new generation of summer tires for the Central European summer roads. European drivers value good wet grip and driving stability in their summer tires. Owners of sporty vehicles look for safety under extreme conditions. The new Nokian Powerproof and the new Nokian Wetproof are carefully developed to match the needs of modern drivers.



“As a Scandinavian company, taking care of people and the environment comes very naturally to us. We want to be the top choice of tires for demanding consumers – those who look for complete peace of mind by choosing state-of-the-art technology and safety as well as support brands that take responsibility for the planet and its future”, says Nokian Tyres’ President & CEO **Hille Korhonen**.



SCANDINAVIAN HERITAGE

In 2018 Nokian Tyres celebrated 120 years in the business. Since 1898 the Finnish company has grown into a global brand that connects accumulated experience of making driving safe in rugged conditions to forerunner technologies and responsibility to create sustainable business.

NEW

PEACE OF MIND FOR TIGHTER TURNS



NOKIAN POWERPROOF


DESIGNED FOR HIGH PERFORMANCE SPORTY CARS

Designed for fast driving, the new UHP tire Nokian Powerproof remains safe, precise and exact on rain-slick motorways and sun-scorched boulevards alike. It masters all the forms of summer with an enjoyable balance. The extremely stable handling and logical steering offer peace of mind for both high-speed lane changes and sudden braking. The new, strong structure ensures first class durability.

- **Precise and stable high speed handling**
- **Excellent wet grip**
- **Enjoyable driving feel**



Tested by TÜV SÜD Product Service GmbH in July 2018 by order of Nokian Tyres. Tire Size: 225/40 R18; Test Car: VW Golf VII 2.0 TDI, VW Golf VII 1.0 TSI, VW Golf GTD 184 hp; Test Locations: Papenburg (D), Wachauring (A); Report No. 713135118.

Mika Häkkinen, a two-time Formula 1 World Champion, is shown leaning against a car tire. He is wearing a dark jacket with 'NOKIAN TYRES' and 'NOKIA' logos. The background shows a dark, overcast sky and a road.

“Nokian Powerproof is a fantastic tire that does exactly what the driver tells it to.

A vertical image on the left side of the page shows a winding asphalt road curving through a rocky, hilly landscape under a bright, hazy sky.

**TESTED BY MIKA HÄKKINEN,
TWO-TIME FORMULA 1
WORLD CHAMPION:**

SAFETY AND RELIABILITY IN EXTREME CONDITIONS

The new Nokian Powerproof summer tire is a UHP product designed for the Central European autobahns.

The starting point for its design was functionality in any summer weather and under any circumstances, even at high speeds. In addition to Nokian Tyres' experts and the latest technology, the development work involved a speed specialist: the tire was test driven by Mika Häkkinen, two-time Formula 1 World Champion.

Häkkinen tested the Nokian Powerproof on several European test tracks. As a high-speed professional, Häkkinen was able to provide feedback on the tire's functionality at the extremes and when operating at the grip limits.

“You can sometimes encounter scenarios where extreme grip and control are required, even outside of a Grand Prix track. Nokian Powerproof is a fantastic tire that does exactly what the driver tells it to”, Häkkinen says.

NEW

PEACE OF MIND FOR RAINY DAYS



NOKIAN WETPROOF

DESIGNED FOR MIDDLE-SIZED AND HIGH POWERED CARS

The new Nokian Wetproof is a safe and reliable tire offering superior driving confidence in all summer conditions with its fine-tuned balance between maximum comfort and extreme safety. Most importantly, it offers excellent wet braking abilities and powerful aquaplaning resistance, which makes driving easy and comfortable even on rainy days. The low rolling resistance enhances fuel-efficiency and supports eco-friendly driving.

- Extreme safety for wet roads
- Maximum comfort
- Easy rolling saves fuel and preserves the environment



Tested by TÜV SÜD Product Service GmbH in July-September 2018 by order of Nokian Tyres. Tire Size: 205/55 R16; Test Car: VW Golf VII 2.0 TDI. Test Locations: Papenburg (D), Wachauring (A); Report No. 713135660.

PROOF OF EXCELLENCE: TÜV SÜD



The Nokian Powerproof and the Nokian Wetproof have been granted the TÜV Tire Performance Mark. This mark from the independent TÜV SÜD testing organization certifies the new summer tires compares favorably with premium competitors in terms of quality and performance.

NOKIAN TYRES SUMMER TIRE SURVEY:

DRIVERS VALUE PREMIUM TIRES WITH GOOD WET GRIP

When it comes to choosing tires, most European drivers appreciate premium tires over their cheaper counterparts. In tires the word premium means a combination of high quality raw materials, innovative material development, structural engineering, testing in real driving conditions and many other things that together form a high-tech product that the driver can rely on in all conditions.

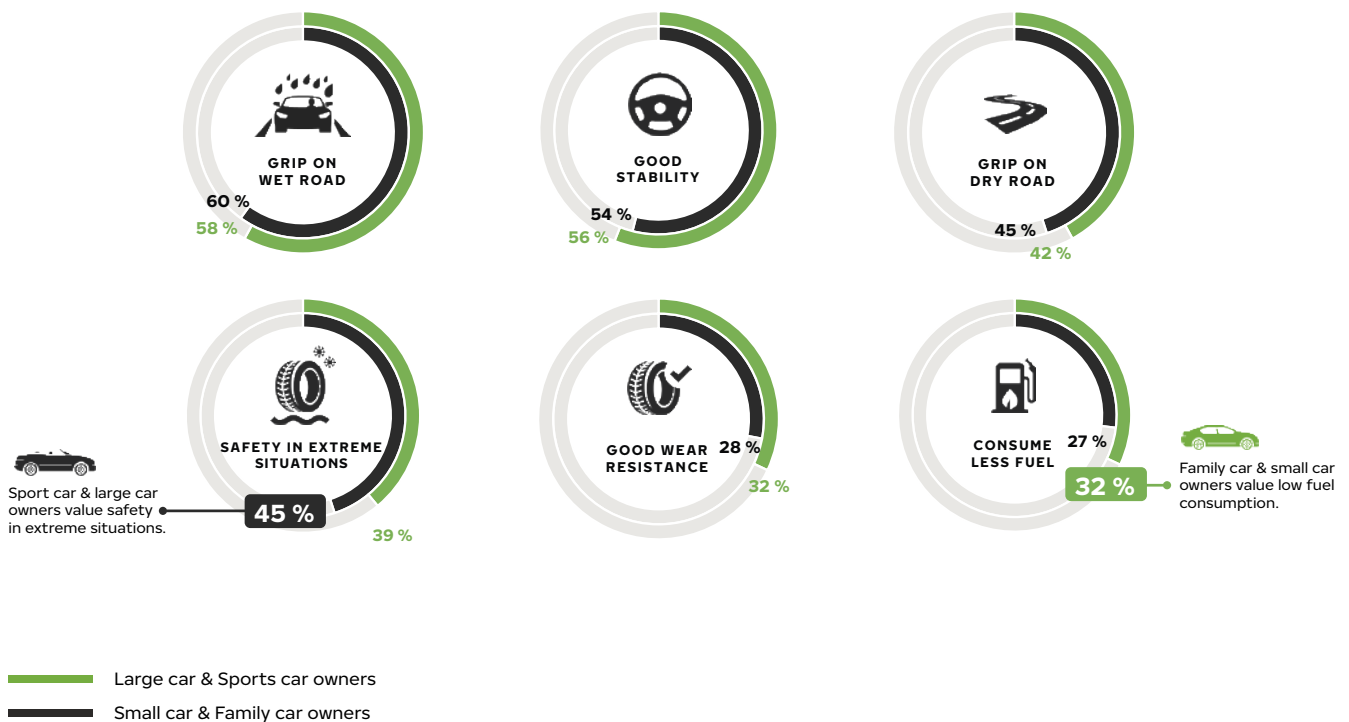
It's no surprise that 58% of the respondents of the Nokian Tyres summer tire survey 2018 agreed that premium tires have better handling qualities on different road conditions. The same amount – 58%

of drivers – also stated that premium tires are safer in challenging weather conditions and their structure is more durable under different road situations.

According to the survey, and as shown below, tire's grip on the wet road is the most important tire characteristic when buying summer tires. Interestingly, the respondents are more worried about the behavior of other people on the road than about the condition of their car or the road itself, since only 13% drivers consider driving on the worn out tires to be risky and just 6% are worried about aquaplaning.

GRIP ON WET ROAD AND GOOD STABILITY

Characteristics valued by CE consumers



*The data is based on an online survey taken in April-May 2018 by Nokian Tyres in cooperation with Taloustutkimus Oy research company. The survey was conducted in five countries (Germany, Poland, Czech Republic, Italy and France) with a sample of 1,000 respondents from each country.



ULTIMATE GREEN SAFETY

NOKIAN ELINE 2

DESIGNED FOR MIDDLE-SIZED CARS

The AA-rated Nokian eLine 2 summer tire ensures reliable top performance under all summer weather conditions. It has the best possible class, A, in the EU tire label's wet grip and fuel efficiency categories. The precise driving feel and optimal comfort can be felt from the first moments of spring until late fall. A unique innovation, Nokian Tyres Coanda Technology, guides and accelerates the removal of water from between the tire and the road, thus effectively preventing aquaplaning.

- **Ultimate control on wet road**
- **Unique green motoring with lowered fuel consumption**
- **Premium driving comfort at any speed**

Tested by TÜV SÜD Product Service GmbH in July – Aug 2016 by order of Nokian Tyres. Tire Size: 205/55 R16 94W; Test Car: VW Golf; Test Locations: Papenburg (D), Wachauring (A); Report No. 713086306-EL2HW.



COMFORT AND ECONOMY

NOKIAN ILINE

DESIGNED FOR SMALLER CARS AND MID-SIZED FAMILY CARS

The Nokian iLine summer tire rolls pleasantly and safely in any summer weather. It offers first-class fuel efficiency, which amounts to greener driving for smaller and mid-sized family cars. The top-notch driving feel remains stable and reliable even under extreme conditions. The unique Venturi Grooves effectively prevent aquaplaning and the pine oil added to the rubber compound maximizes tire durability.

- **Uncompromising safety**
- **Stable and pleasantly silent**
- **Low rolling resistance saves fuel and preserves the environment**

CHOOSING TIRES FOR YOUR ELECTRIC CAR OR HYBRID CAR

The owners of electric cars or hybrids value enjoyable and eco-friendly driving, carefree use and low operating costs. The right tire choice can improve the car's safety and driving comfort and increase its operating range even further.

Nokian Tyres' offers comprehensive range of high-quality summer tires especially developed and tested for use on electric cars. We have products for all popular electric car models, such as **Tesla's Model 3, Model S and Model X, Nissan Leaf, Opel Ampera-e and BMW i3.**

SAFETY

Electric cars and hybrids have battery packs that commonly make them heavier than cars with combustion engines. A heavier car will take longer to stop, which means that high-quality tires become even more important especially on wet roads when it's pouring rain and in case of surprises. Our summer tires have excellent wet grip and strong structure to make your journey safe and reliable.

ECO-FRIENDLINESS

An electric car tire with low rolling resistance will take you further with a single charge and have a lower environmental impact. Our extensive selection has a large number of sizes that have achieved the EU tire label's top A and B categories in terms of fuel efficiency, meaning low rolling resistance.

COMFORT

A high-quality tire brings out the best in powerful electric cars. Our premium tires have been designed to retain their finely tuned characteristics throughout their life cycle. High quality means minimal visits to the service shop. With our quiet and comfortable tires, you can enjoy your car the way you want to.



WE RECOMMEND THE FOLLOWING SUMMER TIRES FOR THE MOST COMMON ELECTRIC CAR MODELS

Hyundai Ioniq Electric:

Nokian eLine 2 AA
205/55 R 16 94 W XL

Opel Ampera-e:

Nokian Powerproof
215/50 R 17 95 W XL

Nissan Leaf:

Nokian eLine 2 AA
205/55 R 16 94 W XL

Nokian Wetproof
215/50 R 17 95 V XL

Nokian Powerproof
215/50 R 17 95 W XL

Renault Zoe ZE:

Nokian eLine 2 AA
185/65 R 15 92 H XL

Nokian Wetproof
195/55 R 16 87 H
195/55 R 16 87 V

Tesla Model S:

Nokian Powerproof
245/45 ZR 19 102 Y XL

Tesla Model X:
Nokian zLine SUV
255/45 ZR 20 105 Y XL
265/50 ZR 19 110 Y XL
275/45 ZR 20 110 Y XL

Tesla Model 3:

Nokian Powerproof
235/45 ZR 18 98 Y XL

VW e-Golf:

Nokian eLine 2 AA
205/55 R 16 94 W XL

TOUGH WET PERFORMER



NOKIAN LINE SUV

DESIGNED FOR SMALL AND MEDIUM SIZED SUVs

The Nokian Line SUV summer tire for varied SUV use offers pleasant comfort, high performance, firm wet grip and excellent aquaplaning prevention properties. It is the correct choice for drivers who value safe driving but also who want to enjoy the power of their SUVs on rough roads and in urban traffic alike. The durability of the tire is uniquely improved by Nokian Tyres Aramid Sidewall technology. The sidewall rubber is reinforced with extremely durable aramid staple fiber, which allows it to better withstand surprising impacts and cuts from sharp edges or objects.

- **Aramid reinforced structure for unique durability**
- **First-class comfort, performance and fuel efficiency**
- **Extreme safety for wet roads**

TOUGH COOL PERFORMER



NOKIAN ZLINE SUV

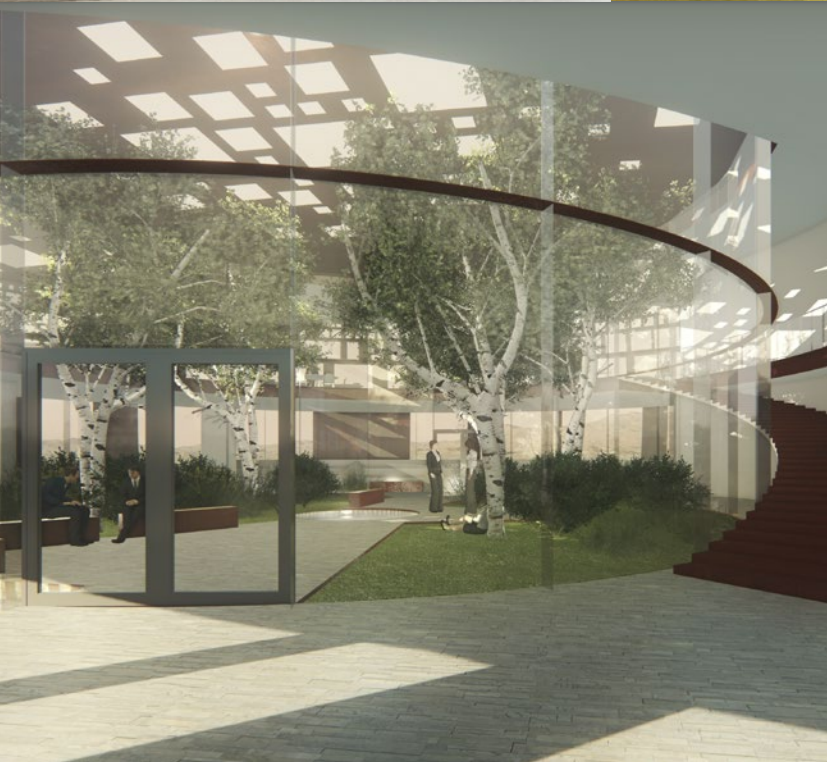
DESIGNED FOR POWERFUL SUVs

The sporty Nokian zLine SUV summer tire provides precise handling, extreme durability, safety for demanding conditions and perfect driving pleasure. It steers logically, quickly, and responsively also at high speeds. The Coral Silica tread compound remains rigid and maintains reliable road contact even during fast driving and in tight corners. Tires' sidewalls are reinforced by the high tenacity Nokian Tyres Aramid Sidewall technology. The unique sidewall compound includes extremely durable aramid staple fiber, which is exceptionally resistant to wear and cuts.

- **Aramid reinforced structure for unique durability**
- **Precise and stable handling at high speeds**
- **Sporty, balanced, and powerful**
- **Effective aquaplaning prevention**

NEW TESTING AND TECHNOLOGY CENTRE IN SPAIN IMPROVES SUMMER TIRE EXPERTISE

The test centre in Spain allows for year-round product development work and testing on demanding and varying tracks.



Nokian Tyres is opening a new, versatile testing and technology centre for summer and winter tires in Santa Cruz de la Zarza, Spain in 2019.

This modern technology centre will be located south of Madrid and it will span approximately 300 hectares. In the future, it will be used for testing summer tires with high speed ratings as well as the characteristics of winter tires. The testing centre's state-of-the-art technology will include, among other things, a 7-kilometre oval track that circles the area. This oval track with banked curves allows for testing summer and winter tires with high speed ratings at speeds of up to 300 km/h (186 mph).

In addition to the tire testing, the technology center will be a platform to develop future innovations. One of the development areas is a guayule plant. Nokian Tyres is currently growing it in the test plants and studying it together with the local university as a possible source of high-quality natural rubber.

NEW U.S. FACTORY SUPPORTS NOKIAN TYRES' GROWTH

Nokian Tyres has started to build a tire factory in the USA.

The new greenfield factory will be located in Dayton (Rhea County), Tennessee with the annual capacity of 4 million tires and an expansion potential in the future. The site will also house a distribution facility with a storage capacity of 600,000 tires.

The first tires are to be produced in 2020. The plant will service customers across the United States and Canada, concentrating on the production of North American-specific car and light truck all-season tires.



DURABILITY FOR HARD-WORKING PROFESSIONALS



NOKIAN CLINE

**DESIGNED FOR DELIVERY TRUCKS,
VANS AND CAMPERVANS**

The Nokian cLine van tire keeps the workday rolling smoothly in all kinds of conditions. The tire offers stability, durability and safety for demanding professional use during the varying summer days. Nokian cLine tires come with two different tread models: The Cargo version is tailored for **heavy vehicles and loads**, the Van version is intended for **lighter loads and passenger transport**. The safety of both of these tires is maximized by the Clinch rubber compound that offers excellent durability when handling massive loads.

- Resists wear and maintains its good properties longer
- Stable and comfortable to drive even at heavy loads
- Excellent wet grip and handling
- Cut-resistant sidewalls prevent puncturing

FIRM DURABILITY



NOKIAN ROTIIVA® AT & NOKIAN ROTIIVA® AT PLUS

**DESIGNED FOR HEAVY SUV
TYPE 4WD VEHICLES AND PICKUPS**

The Nokian Rotiiva AT and Nokian Rotiiva AT Plus are excellent on asphalt and gravel, but also roll lightly under easy off-road conditions. The unique tread pattern ensures good self-cleaning and stable handling under varying summer weather. The sturdy structure and tailored, cut-resistant tread compound give the tires excellent durability even with heavier cars and under demanding conditions. The optimized placement and support of the tread blocks and the more aggressive shoulder area design on the renewed Nokian Rotiiva AT Plus improve driving stability.

- **Aggressive tread pattern ensures firm grip**
- **Extremely stable structure provides stability**
- **Cut-resistant tread compound improves durability**



NOKIAN ROTIIVA® HT

**DESIGNED FOR HEAVY SUV
TYPE 4WD VEHICLES AND PICKUPS**

The versatile Nokian Rotiiva HT summer tire can reliably withstand the stress of varying roads. This special tire provides exceptionally comfortable handling and it grips firmly on asphalt and gravel roads alike. The rubber compound resists wear and cuts very well, and it ensures excellent durability.

- **Comfortable and stable handling**
- **Safe on different surfaces and under varying weather conditions**
- **The rubber compound is tailored for heavy use and is highly wear resistant**



ULTIMATE DURABILITY



NOKIAN ROCKPROOF®

**DESIGNED FOR LIGHT TRUCKS,
SUVS AND OFF-ROAD USE**

The Nokian Rockproof offers extreme durability for professional driving and off-road enthusiasts. It is a fearless performer at quarries, forests and mining areas. This sturdy tire is a tireless workhorse with a thoroughbred mining compound that can handle even unexpected impacts during demanding off-road use. The cut-resistant Nokian Tyres Rockproof Hybrid tread compound and aggressive tread pattern provide the tire with excellent resistance even in rough off-road conditions.

- **Ultimate durability for demanding professional use**
- **Firm and precise handling**
- **Stone ejectors improve service life**



**ROCKPROOF HYBRID
RUBBER COMPOUND
EXTREME CUT RESISTANCE
- MORE WORKING HOURS**

The Nokian Tyres Rockproof Hybrid tread compound is tailored for challenging off-road use. The tire's extreme cut resistance comes into its own during professional use in mines and quarries as well as in off-road driving.



**STONE EJECTORS ON THE
GROOVE BOTTOMS
- IMPROVED DURABILITY**

Stone ejectors prevent sharp stones from attaching to the tire's tread surface and penetrating the tire structure. The stone ejectors improve the tire's service life and offer additional protection by preventing tire body damage.

MORE DURABILITY AND PERFORMANCE

**UNIQUELY SHOCK-RESISTANT SIDEWALLS
PREVENT A COMMON TIRE DAMAGE**

The unique Aramid Sidewall technology developed by Nokian Tyres offers a new type of durability and protection for demanding driving conditions.

In all normal constructed car tires, the weakest spot of the tire is its sidewalls, and as small damages to the tread rubber can be patched up, the sidewalls are not repairable. Nokian Tyres solved this problem with a unique innovation to strengthen the sidewalls with the same material, aramid fiber, that is used in bulletproof vests and airplanes. Toughened sidewalls allow the tire to withstand impacts and cuts that can puncture the tire.

- NOKIAN ZLINE SUV
- NOKIAN LINE SUV
- NOKIAN ROCKPROOF
- NOKIAN ROTIIVA AT
- NOKIAN ROTIIVA AT PLUS
- NOKIAN ROTIIVA HT
- NOKIAN CLINE
- NOKIAN WEATHERPROOF SUV
- NOKIAN WEATHERPROOF C



BEYOND FOUR SEASONS

Nokian Tyres All-Weather range for passenger cars, SUVs and vans.

Nokian Weatherproof tires are designed for year-round use and they ensure first-class safety, high performance and durability in all types of driving conditions. The Nokian Weatherproof tires stand out from the usual All-Season tires thanks to their excellent grip characteristics both in summer and winter. They combine Nokian Tyres' legendary winter safety with the precise driving stability and firm handling of the summer products.

All of the sizes have the Snowflake symbol (3PMSF), which indicates that the tires have been officially approved for winter use.



SNOWY ROADS

Provides a strong grip and precise braking on snow. Stays flexible at low temperatures.



WET ROADS

Effectively prevents slushplaning and aquaplaning and stops instantly on wet roads.



DRY ROADS

Extreme stability and grip, even at high speeds on dry roads.



DURABILITY ALL YEAR LONG

The tread compound works wonderfully along a wide range of temperatures.



LOW FUEL CONSUMPTION

The Nokian Weatherproof tires reduce fuel consumption and CO2 emissions due to low rolling resistance.

NOKIAN WEATHERPROOF®

DESIGNED FOR PASSENGER CARS

Safe in the winter, precise in the summer. The versatile Nokian Weatherproof is a winter tire with excellent grip characteristics, and at the same time, it is a summer tire that rolls precisely in hot summer weather. The new-generation silica tread compound is tailored for varying conditions. Winter grip is excellent at temperatures near zero and slightly below it. During summertime, the tire allows for good wet grip and low rolling resistance, which reduces fuel consumption.

- Superior on snow, excellent grip even on wet roads
- Durable high performance throughout the year
- Extremely stable and comfortable driving behavior

Tested by TÜV SÜD Product Service GmbH in October 2016 – January 2017 by order of Nokian Tyres. Tire Size: 195/65 R15; Test Car: VW Golf VII; Test Locations: Papenburg (D), Wachauring (A), Ivalo (FI), Garching (D), Neubiberg (D); Report No. 713091822-AS.



NOKIAN WEATHERPROOF® SUV

DESIGNED FOR POWERFUL SUVs

The comfortable and durable Nokian Weatherproof SUV offers excellent handling on snow, bare roads or even the ever treacherous slush. During summer the tire rolls precisely in hot summer weather and grips firmly on wet roads. The tread compound is tailored to endure high performance driving and heavier vehicles. The versatile tire is pleasantly silent and fuel efficient in every season. The sidewall rubber is reinforced with extremely durable aramid fiber, which allows the tire to better withstand surprising impacts and cuts from sharp edges or objects.

- Superior on snow, excellent grip even on wet roads
- Durable high performance throughout the year
- Extremely stable and comfortable driving behaviour
- Aramid reinforced structure for unique durability



NOKIAN WEATHERPROOF® C

DESIGNED FOR DELIVERY VEHICLES AND LIGHTER VANS

The durable and comfortable All-Weather tire Nokian Weatherproof C manages its high wheel loads firmly and balanced. It is safe in the winter and handles precisely in the summer. It has different tread models for larger vehicles and lighter loads. The symmetrical, arrow-shaped tread pattern (Nokian Weatherproof C Cargo) for **delivery vehicles** guarantees good grip on wet and snowy surfaces. For **lighter vans**, the customized asymmetrical tread pattern (Nokian Weatherproof C Van) reduces risk of aquaplaning. The sidewall rubber of both models is reinforced with extremely durable aramid fiber, which allows the tire to better withstand surprising impacts and cuts from sharp edges or objects.

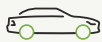
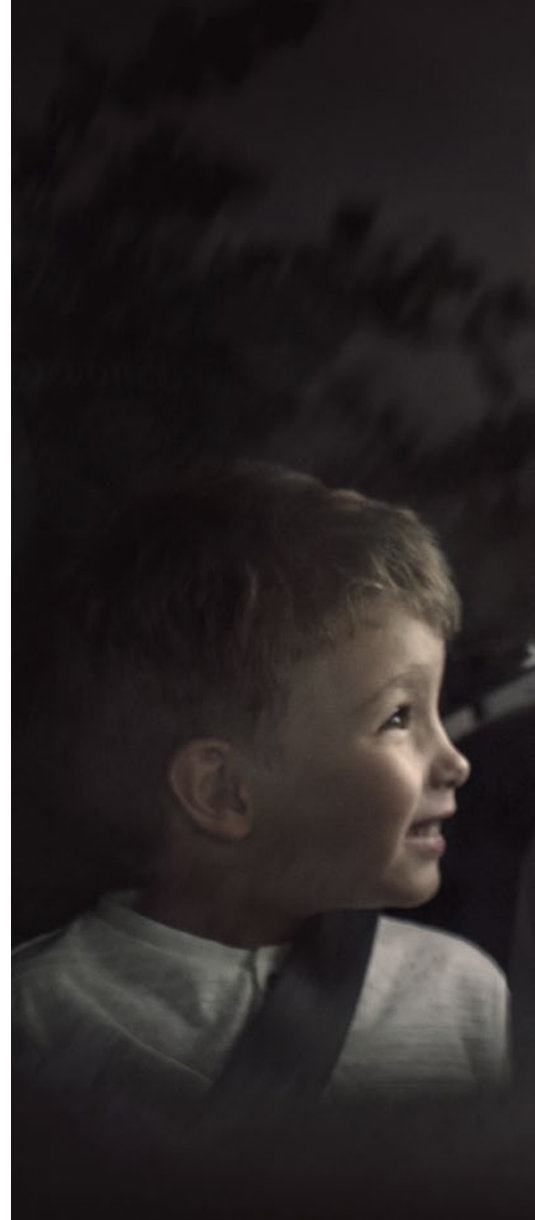
- Superior on snow, excellent grip even on wet roads
- Durable high performance throughout the year
- Extremely stable and comfortable driving behavior
- Cut-resistant sidewalls prevent puncturing

BUYING SUMMER TIRES?

HERE IS HOW YOU CAN FIND THE BEST ONES FOR YOU

Your car rests on four palm-sized patches that keep you on the road and in control. Your choice of active safety equipment is very important. When considering the options, you should ask yourself a few questions: how much do you drive, what kinds of roads do you use, and what are you like as a driver: do you seek the best possible driving comfort, or do you favour a small fuel bill? Nokian Tyres' versatile summer tire selection offers you premium performance under varying weather and road conditions. All of our product development work revolves around you and all other drivers, whose everyday driving and safety we want to enhance.

**Rely on our test-winning products and enjoy safe driving!
Just choose a tire that suits your specific requirements!**



PASSENGER CAR TIRES

	NOKIAN POWERPROOF	NOKIAN WETPROOF	NOKIAN ILINE	NOKIAN ELINE 2
The most important features	Excellent high speed handling	Balanced safety and comfort	Stable and comfortable	Optimal safety and green driving
Type of car	High-performance, sporty cars	Middle-sized and high-powered cars	Smaller cars and mid-sized family cars	Middle-sized cars
Wet grip	●●●●●	●●●●●	●●●●●	●●●●●
Aquaplaning	●●●●●	●●●●●	●●●●●	●●●●●
High speed handling	●●●●●	●●●●●	●●●●●	●●●●●
Comfort/Noise level	●●●●●	●●●●●	●●●●●	●●●●●
Fuel efficiency	●●●●●	●●●●●	●●●●●	●●●●●
Speed rating	W (270 km/h) Y (300 km/h)	T (190 km/h) H (210 km/h) V (240 km/h) W (270 km/h)	T (190 km/h) H (210 km/h)	H (210 km/h) W (270 km/h)
Tire sizes	17-20	14-18, 20	13-16	15-16
Nokian Tyres Satisfaction Promise	✓	✓	✓	✓



PRECISION, POWER AND COMFORT FOR SUV DRIVERS

Powerful four-wheel drive vehicles pose tougher demands on tires in terms of both performance and structure. SUV tires must have a precise driving feel, and they must withstand higher wheel loads and work reliably under extreme speeds. SUV drivers also value versatile features, and want their tires to be comfortable and quiet like passenger car tires.



SUV TIRES

	NOKIAN ZLINE SUV	NOKIAN LINE SUV	NOKIAN ROTIIVA® HT	NOKIAN ROTIIVA® AT	NOKIAN ROTIIVA® AT PLUS
Type of car	Powerful SUVs	Small and medium-sized SUVs	Heavy SUV type 4WD vehicles and pickups	Light trucks, larger SUVs, and pick-ups	Light trucks, larger SUVs, and pick-ups
Wet grip	●●●●●	●●●●●	●●●●●	●●●●●	●●●●●
Aquaplaning	●●●●●	●●●●●	●●●●●	●●●●●	●●●●●
High speed handling	●●●●●	●●●●●	●●●●●	●●●●●	●●●●●
Comfort/Noise level	●●●●●	●●●●●	●●●●●	●●●●●	●●●●●
Fuel efficiency	●●●●●	●●●●●	●●●●●	●●●●●	●●●●●
Speed rating	V (240 km/h) W (270 km/h) Y (300 km/h)	T (190 km/h) H (210 km/h) V (240 km/h)	R (170 km/h) S (180 km/h) T (190 km/h) H (210 km/h)	R (170 km/h) S (180 km/h) T (190 km/h) H (210 km/h)	S (180 km/h)
Tire sizes	17–22	15–19	16–18, 20	15–20	16–20
Nokian Tyres Satisfaction Promise	✓	✓	✓	✓	✓
Nokian Tyres Aramid Guarantee	✓	✓	✓	✓	✓
At it's best: ■ Asphalt road ■ Sandy road ■ Off-road	■■■■■ ■	■■■■■ ■	■■■■■ ■	■■■■■ ■ ■	■■■■■ ■ ■

PEACE OF MIND FOR YOUR JOURNEY

OUR CONSUMER PROMISES TO YOU



NOKIAN TYRES ARAMID GUARANTEE

Protection in case of sidewall breakage

Our SUV and van tires provide you durability and protection for surprising situations. Extremely durable Aramid staple fibers, which are also successfully used in bulletproof vests, reinforce the sidewall to make it exceptionally resistant to wear and cuts. To convince you of our

robust tires completely: If you make your tire purchase in one of our specified tire shops, the Nokian Tyres Aramid Guarantee covers accidentally on sidewall damaged tires and provides you with a new, corresponding product free of charge.



NOKIAN TYRES SATISFACTION PROMISE

Make your tire purchase in one of our specified tire shops, and we will give you a special guarantee: If you aren't happy with your new Nokian Tyres products, you may swap them to another set free of charge.

The Nokian Tyres Satisfaction Promise applies to Nokian Tyres' summer tires, winter

tires and All-Weather tires and a return is to be made within 14 days from date of purchase. The list is updated annually.

Nokian Tyres Satisfaction Promise may not be available in all countries. Please contact your Nokian Tyres specified retailer for details.

READ MORE: nokiantyres.com/consumer-promises/

SUMMER TIRES 2019

NOKIAN POWERPROOF		195/60 R 15 88V		C A) 68	185/65 R 15 88H	C C) 67	255/45 ZR 20 105Y XL	C A)) 71
215/55 R 17 98W XL	C A) 69	205/60 R 15 91V	C A) 68	195/65 R 15 91H	C C) 68	265/45 ZR 20 108Y XL	C A)) 71	
225/55 ZR 17 101Y XL	C A) 69	185/55 R 15 86H XL	B A) 66	195/65 R 15 91T	C C) 68	275/45 ZR 20 110Y XL	C A)) 71	
235/55 ZR 17 103Y XL	C A)) 72	195/55 R 15 85H	C A) 68	205/65 R 15 94H	C C) 68	275/40 ZR 20 106Y XL	C A)) 71	
205/50 ZR 17 93Y XL	B A) 69	195/55 R 15 85V	C A) 68	215/65 R 15 96H	C C) 68	295/40 ZR 20 110Y XL	C A) 72	
215/50 R 17 95W XL	B A) 69	195/50 R 15 82V	B A) 68	185/60 R 15 84H	B C) 67	265/45 ZR 21 104Y	C A)) 70	
225/50 ZR 17 98Y XL	C A) 69	195/60 R 16 89H	B A) 68	195/60 R 15 88H	C C) 68	275/40 ZR 21 107Y XL	C A)) 71	
225/50 R 17 98W XL	C A) 69	205/60 R 16 92H	C A) 68	195/50 R 15 82H	C C) 68	295/35 ZR 21 107Y XL	C A) 72	
215/45 ZR 17 91Y XL	C A) 69	205/60 R 16 96V XL	B A) 68	205/55 R 16 91H	C C) 68	295/30 ZR 22 103Y XL	C A) 72	
225/45 ZR 17 94Y XL	C A) 69	215/60 R 16 99H XL	C A) 68					
225/45 ZR 17 91Y	*	215/60 R 16 99V XL	C A) 68	NOKIAN LINE SUV		NOKIAN CLINE CARGO		
235/45 ZR 17 97Y XL	C A)) 72	225/60 R 16 102W XL	B A) 68	235/75 R 15 109T XL	B B)) 72	215/70 R 15 C 109/107S	C C)) 70	
235/45 ZR 17 94Y	C A)) 71	195/55 R 16 87H	C A) 68	205/70 R 15 96H	C A)) 70	225/70 R 15 C 112/110S (115N)	C C)) 70	
245/45 ZR 17 99Y XL	C A)) 72	195/55 R 16 87V	C A) 68	215/70 R 16 100H	C A)) 70	185/75 R 16 C 104/102S	C A)) 70	
215/40 R 17 87W XL	C A) 69	205/55 R 16 91H	C A) 68	225/70 R 16 103H	B B)) 70	195/75 R 16 C 107/105S	C A)) 70	
245/40 ZR 17 95Y XL	C A)) 72	205/55 R 16 91V	C A) 68	235/70 R 16 106H	B B)) 70	205/75 R 16 C 113/111S	C C)) 70	
225/50 R 18 99W XL	C A) 69	205/55 R 16 94V XL	B A) 68	245/70 R 16 111H XL	B B) 69	215/75 R 16 C 116/114S	C C)) 70	
235/50 ZR 18 101Y XL	B A)) 72	205/55 R 16 94W XL	B A) 68	265/70 R 16 112H	B B) 69	225/75 R 16 C 121/120R	C C)) 70	
245/50 ZR 18 100Y	C A)) 71	215/55 R 16 93H	C A) 68	215/65 R 16 102H XL	C A)) 71	225/65 R 16 C 112/110T	C C)) 70	
225/45 ZR 18 95Y XL	C A) 69	215/55 R 16 97V XL	B A) 68	235/60 R 16 100H	C A)) 70	235/65 R 16 C 121/119R	C A) 68	
235/45 ZR 18 98Y XL	C A)) 72	215/55 R 16 97W XL	B A) 68	265/70 R 17 115H	B B) 69	235/60 R 17 C 117/115R	C C)) 72	
245/45 ZR 18 100Y XL	C A)) 72	225/55 R 16 99W XL	B A) 68	215/65 R 17 103H XL	C A)) 71			
255/45 ZR 18 103Y XL	C A)) 72	195/50 R 16 88V XL	C A) 68	225/65 R 17 106H XL	C A)) 71	NOKIAN CLINE VAN		
225/40 ZR 18 92Y XL	C A) 69	205/50 R 16 87V	C A) 68	235/65 R 17 108H XL	C A)) 71	165/70 R 14 C 89/87S	E A)) 70	
235/40 ZR 18 95Y XL	C A)) 72	225/50 R 16 92W	C A) 68	245/65 R 17 111H XL	B B) 69	175/70 R 14 C 95/93S	C A)) 70	
245/40 ZR 18 97Y XL	C A)) 72	195/45 R 16 84V XL	C A) 68	255/65 R 17 114H XL	C A) 70	175/65 R 14 C 90/88T	C A)) 70	
255/40 ZR 18 99Y XL	C A)) 72	215/45 R 16 90V XL	B A) 68	265/65 R 17 116H XL	B B) 70	185 R 14 C 102/100S	C A)) 70	
255/35 ZR 18 94Y XL	C A)) 72	205/55 R 17 95V XL	B A) 68	215/60 R 17 100H XL	C A)) 71	195/70 R 15 C 104/102S	C A)) 70	
225/45 R 19 96W XL	C A) 69	215/55 R 17 94V	C A) 68	225/60 R 17 103V XL	C A)) 71	205/70 R 15 C 106/104S	C A)) 70	
235/45 R 19 99W XL	C A)) 72	205/50 R 17 93W XL	B A) 68	235/60 R 17 102V	C A)) 70	205/65 R 15 C 102/100T	C A)) 70	
245/45 ZR 19 102Y XL	C A)) 72	215/50 R 17 95V XL	C A) 68	255/60 R 17 106V	B B) 69	215/65 R 15 C 104/102T	C A)) 70	
255/45 ZR 19 104Y XL	B A)) 72	225/50 R 17 98V XL	C A) 68	235/55 R 17 103V XL	C A)) 71	185/60 R 15 C 94/92T	C A)) 70	
225/40 ZR 19 93Y XL	C A) 69	205/45 R 17 88W XL	C A) 68	225/60 R 18 104H XL	C A)) 71	195/65 R 16 C 104/102T	C A)) 70	
235/40 ZR 19 96Y XL	C A)) 72	215/45 R 17 91W XL	C A) 68	235/60 R 18 107H XL	C A)) 71	205/65 R 16 C 107/105T	C A)) 70	
245/40 ZR 19 98Y XL	C A)) 72	225/45 R 17 94W XL	C A) 68	245/60 R 18 105H	C A) 68	215/65 R 16 C 109/107T	C A)) 71	
255/40 ZR 19 100Y XL	C A)) 72	215/50 R 18 92W	*	265/60 R 18 110V	B B) 69	195/60 R 16 C 99/97T	C A)) 70	
275/40 ZR 19 101Y	C A)) 71	195/55 R 20 95H XL	B A) 68	285/60 R 18 116V	B B) 71	215/60 R 16 C 103/101T	C A)) 70	
225/35 ZR 19 88Y XL	C A) 69	205/55 R 16 91W Flat Run	E A) 68	215/55 R 18 99V XL	C A)) 71	215/60 R 17 C 109/107T (104H)	C A) 69	
235/35 ZR 19 91Y XL	C A)) 72	NOKIAN ELINE2		215/55 R 18 95V	C A)) 70	225/55 R 17 C 109/107T (104H)	C A)) 71	
245/35 ZR 19 93Y XL	C A)) 72			225/55 R 18 98V	C A)) 70			
255/35 ZR 19 96Y XL	C A)) 72	185/65 R 15 92H XL AA	A A) 68	235/55 R 18 100V	C A)) 70	NOKIAN ROTIIVA HT		
245/40 ZR 20 99Y XL	C A)) 72	195/65 R 15 95H XL AA	A A) 68	225/55 R 19 103V XL	C A)) 71	245/75 R 16 111S	C C)) 72	
245/35 ZR 20 95Y XL	C A)) 72	185/60 R 15 88H XL AA	A A) 68	NOKIAN ZLINE SUV		265/75 R 16 116S	C C)) 73	
255/35 ZR 20 97Y XL	C A)) 72	215/60 R 16 99W XL AA	A A) 68	235/65 R 17 108V XL	C A)) 70	245/70 R 17 110T	C C)) 72	
275/35 ZR 20 102Y XL	C A)) 72	205/55 R 16 94W XL AA	A A) 68	235/60 R 18 107W XL	C A)) 70	235/65 R 18 110H XL	C C)) 72	
275/30 ZR 20 97Y XL	C A)) 72	NOKIAN ILINE		255/60 R 18 112V XL	C A)) 71	265/65 R 18 114H	C C)) 73	
225/55 R 17 97W Flat Run	E A) 68			255/60 R 18 109Y XL	C A) 70	245/60 R 18 109H XL	C C)) 72	
225/50 R 17 94W Flat Run	E A) 68	155/80 R 13 79T	C C) 67	235/55 R 19 105W XL	C A)) 70	275/60 R 20 115H	C C)) 73	
225/45 R 17 91W Flat Run	E A) 68	155/70 R 13 75T	C C) 67	245/55 R 19 103V	C A)) 69	LT215/85 R 16 115/112S	C C)) 73	
245/50 R 18 100W Flat Run	E A)) 71	165/70 R 13 79T	C C) 67	255/55 R 19 111W XL	C A)) 71	LT225/75 R 16 115/112S	C C)) 73	
225/45 ZR 18 91Y Flat Run	E A) 68	175/70 R 13 82T	C C) 67	275/55 R 19 111W	C A)) 70	LT245/75 R 16 120/116S	C C)) 73	
245/45 ZR 18 96Y Flat Run	E A)) 71	165/70 R 14 81T	C C) 67	235/50 R 19 99V	C A)) 69	LT265/75 R 16 123/120S	E C)) 73	
		175/70 R 14 84T	C C) 67	255/50 R 19 107W XL	C A)) 71	LT235/80 R 17 120/117R	C C)) 73	
		185/70 R 14 88T	C C) 67	265/50 ZR 19 110Y XL	B A) 70	LT245/70 R 17 119/116S	C C)) 73	
NOKIAN WETPROOF		155/65 R 14 75T	C C) 67	275/45 ZR 19 108Y XL	C A)) 71	LT265/70 R 17 121/118S	C C)) 73	
175/65 R 14 82T	C A) 66	165/65 R 14 79T	C C) 67	285/45 R 19 111W XL	C A)) 73	LT275/70 R 18 125/122R	E C)) 73	
175/65 R 15 84H	C A) 66	175/65 R 14 82T	C C) 67	275/55 R 20 117V XL	C A)) 71	LT275/65 R 18 123/120S	E C)) 73	
185/65 R 15 88H	C A) 66	185/65 R 14 86T	C C) 67	245/50 R 20 102W	C A)) 69	NOKIAN ROTIIVA AT		
195/65 R 15 91H	B A) 68	185/60 R 14 82T	C C) 67	265/50 R 20 111W XL	C A)) 71	235/75 R 15 109T XL	C E)) 72	
195/65 R 15 95H XL	B A) 68	185/60 R 14 82H	C C) 67	275/50 R 20 113W XL	C A)) 71	31x10.50 R 15 LT 109S	E C)) 73	
195/65 R 15 91V	B A) 68	175/65 R 15 84T	C C) 67	285/50 R 20 116W XL	C A)) 73	245/75 R 16 111S	B E)) 72	
185/60 R 15 88H XL	C A) 66	185/65 R 15 88T	C C) 67					
195/60 R 15 88H	C A) 68							

The EU tyre label values can be found after the size marking, for example 215/65 R 15 100 H XL BC))72. The first letter indicates the fuel economy class of the tyre [B], and the second indicates the wet grip class [C]. The round brackets indicate the noise level of the tyre.)))= exceeds the future type approval limit,))= corresponds to future type approval,)= more than 3 dB quieter than the future type approval. The number figure [72] indicates the external rolling noise in decibels.

*EU tyre label values available later

265/75 R 16 116S	C E) 73	LT245/70 R 17 119/116S	E C) 71	175/65 R 15 84T	C B) 68	245/40 R 19 98V XL	C B) 72
215/70 R 16 100T	E E) 72	LT265/70 R 17 121/118S	E C) 71	185/65 R 15 88T	C A) 68	255/40 R 19 100V XL	C A) 73
225/70 R 16 107T XL	C E) 72	LT275/70 R 17 114/110S	E C) 71	185/65 R 15 92H XL	B A) 68	205/55 R 16 91V Flat Run	E A) 69
235/70 R 16 109T XL	C E) 72	LT285/70 R 17 121/118S	E C) 71	195/65 R 15 91T	C B) 69	225/45 R 17 91V Flat Run	E A) 69
245/70 R 16 111T XL	C E) 72	LT315/70 R 17 121/118S	E C) 71	195/65 R 15 91H	C B) 69		
255/70 R 16 111T	C E) 73	LT265/70 R 18 124/121S	E A) 71	205/65 R 15 94H	C B) 69	NOKIAN WEATHERPROOF SUV	
265/70 R 16 112T	E E) 73	LT275/70 R 18 125/122S	E A) 71	185/60 R 15 88H XL	C B) 68	215/70 R 16 100H	C B) 69
215/65 R 16 102T XL	C E) 72	LT275/65 R 18 123/120S	E A) 71	195/60 R 15 88H	C B) 69	225/70 R 16 107H XL	C B) 69
235/70 R 17 111T XL	C E) 72	LT275/65 R 20 126/123S	E A) 71	185/55 R 15 82H	C B) 68	215/65 R 16 102H XL	C A) 69
245/70 R 17 110T	C E) 72	LT275/55 R 20 120/117S	*	195/55 R 15 85H	C B) 69	215/65 R 17 103H XL	C B) 72
255/70 R 17 112T	C E) 73	LT305/55 R 20 121/118S	F C) 71	195/50 R 15 82H	C B) 69	225/65 R 17 106H XL	C A) 69
265/70 R 17 115T	C E) 73			205/60 R 16 92H	C B) 69	235/65 R 17 108H XL	C A) 69
235/65 R 17 108T XL	C E) 72	NOKIAN ROCKPROOF		215/60 R 16 99H XL	C A) 69	215/60 R 17 100H XL	C A) 69
245/65 R 17 111T XL	C E) 72	LT225/75 R 16 115/112Q	n/a	195/55 R 16 87H	C B) 69	225/60 R 17 103H XL	C A) 69
265/65 R 17 116T XL	C E) 73	LT245/75 R 16 120/116Q	n/a	205/55 R 16 91H	C A) 69	235/60 R 17 106H XL	C A) 69
255/70 R 18 113H	*	LT235/80 R 17 120/117Q	n/a	205/55 R 16 94V XL	C B) 69	235/60 R 18 107V XL	C A) 69
265/65 R 18 114H	C E) 73	LT245/75 R 17 121/118Q	n/a	215/55 R 16 93H	C A) 69	235/55 R 18 104V XL	C A) 69
275/65 R 18 116T	E E) 73	LT245/70 R 17 119/116Q	n/a	215/55 R 16 97V XL	C A) 69	255/55 R 18 109V XL	C A) 70
255/60 R 18 112H XL	C E) 73	LT265/70 R 17 121/118Q	n/a	225/55 R 16 95V	C A) 69	235/50 R 18 101V XL	C B) 69
265/60 R 18 114T XL	E E) 73	LT285/70 R 17 121/118Q	n/a	205/55 R 17 95V XL	C B) 69	235/55 R 19 105V XL	C B) 69
275/60 R 20 115H	E E) 72	LT315/70 R 17 121/118Q	n/a	215/55 R 17 98V XL	C B) 69	255/50 R 19 107V XL	C A) 73
275/55 R 20 117T XL	E E) 72	35x12.50 R 20 LT 121Q	n/a	225/55 R 17 97V	C A) 69		
LT235/75 R 15 116/113S	E C) 73			235/55 R 17 103V XL	C A) 69	NOKIAN WEATHERPROOF C	
LT215/85 R 16 115/112S	E C) 73	NOKIAN WEATHERPROOF		205/50 R 17 89V	C B) 69	175/65 R 14 C 90/88T	C E) 68
LT235/85 R 16 120/116R	E C) 73	155/70 R 13 75T	C B) 68	215/50 R 17 95V XL	C B) 69	195/70 R 15 C 104/102R	C E) 73
LT285/75 R 16 122/119S	E B) 74	165/70 R 13 79T	C B) 68	225/50 R 17 98V XL	C A) 69	215/70 R 15 C 109/107R	E E) 73
LT235/80 R 17 120/117R	E C) 73	175/70 R 13 82T	C B) 68	205/45 R 17 88V XL	E B) 69	225/70 R 15 C 112/110R (115N)	C E) 73
LT245/75 R 17 121/118S	E C) 73	165/70 R 14 81T	C B) 68	225/45 R 17 94V XL	C A) 69	195/75 R 16 C 107/105R	C E) 73
		175/70 R 14 84T	C B) 68	235/45 R 17 94V	C A) 69	205/75 R 16 C 113/111R	C C) 73
NOKIAN ROTIIVA AT PLUS		155/65 R 14 75T	C B) 68	225/45 R 18 95V XL	C A) 69	215/75 R 16 C 116/114R	C C) 73
LT225/75 R 16 115/112S	E C) 71	165/65 R 14 79T	C B) 68	235/45 R 18 98V XL	C B) 70	225/75 R 16 C 121/120R	C C) 73
LT245/75 R 16 120/116S	E C) 71	175/65 R 14 82T	C B) 68	245/45 R 18 100V XL	C B) 72	195/65 R 16 C 104/102T	C E) 73
LT265/75 R 16 123/120S	E A) 71	185/65 R 14 86T	C B) 68	225/40 R 18 92V XL	C A) 69	205/65 R 16 C 107/105T	C E) 73
LT245/75 R 17 121/118S	E C) 71	185/60 R 14 82H	C B) 68	245/40 R 18 97V XL	C B) 72	215/65 R 16 C 109/107T	C E) 73
						225/65 R 16 C 112/110R	C E) 73
						235/65 R 16 C 121/119R	C E) 73
						195/60 R 16 C 99/97T	E C) 73

The EU tyre label values can be found after the size marking, for example 215/65 R 15 100 H XL BC) 72. The first letter indicates the fuel economy class of the tyre [B], and the second indicates the wet grip class [C]. The round brackets indicate the noise level of the tyre.))= exceeds the future type approval limit,)= corresponds to future type approval,)= more than 3 dB quieter than the future type approval. The number figure [72] indicates the external rolling noise in decibels.

nokian[®] TYRES

NOKIAN TYRES PLC

P.O.Box 20, FI-37101 Nokia, Finland

Tel. +358 10 401 7000

Fax +358 10 401 7518

info@nokiantyres.com

WWW.NOKIANTYRES.COM

